

I.V.

DOCK - RAMP

HEAVY DUTY "I" SERIES

Hydraulic Dock Leveler



Durability is the hallmark of I.V. DOCK-RAMP. We deliver one of the highest strength ratios in the industry. We incorporate a minimum of six (6) I-beam deck supports in all I-Series Dock Levelers. At higher capacities that increases to eight (8) I-beams. Structural I-beams offer greater strength support.

Standard Features

OPERATION

- . Hydraulic dock levelers are efficient and easy to use.
- . Activation and positioning is achieved with constant pressure push button controls.
- . The electro/hydraulic control and operation lets you address additional safety concerns such as interlocking with vehicle restraints, overhead doors, and other equipment.
- . The ease of operation reduces operator fatigue and the temptation to take shortcuts, making hydraulic levelers particularly valuable for high-volume docks, multiple shifts, and severe conditions.

SAFETY

- . Velocity fuse limits platform free fall to less than 3 inches.
- . V-grooved maintenance stand supports both deck and lip for safe under deck inspections
- . Heavy-duty three piece full operating range toe guard protection for maximum operator safety.
- . Hydraulic lip cylinder increases operating efficiency and reduces maintenance.
- . Power system motor equipped with overload protection.
- . Dual purpose lip keepers for both cross traffic support and automatic night locks.
- . (2) bumpers to protect the building wall.

LIP

- . Consistent and reliable lip extension is powered by a hydraulic cylinder, providing controlled dampening and cushioned end motion over conventional mechanically actuated lips.
- . Yieldable lip provides shock absorbing action to prevent potential damage caused by reversing trailer impact.

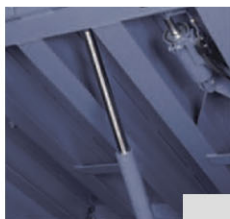


CONSTRUCTION

- . 50,000 PSI high tensile checker plate
- . Minimum six full length structural 4 x 6 "I" beams, provide maximum deck support throughout dynamic impact area.
- . Flat bar rear frame for quick and easy installation to suit inconsistent pit construction tolerances.
- . Continuous full width plus four vertical rear frame supports to absorb cross traffic impact.
- . Platform designed with floating rear hinge. This floating action allows full width contact between lip and truck bed. Prevents damage to forks, tires, steering system and load. Allows up to 4" of lateral deck compensation to service canted truck beds.



NEM4 WATERTIGHT REMOTE SINGLE BUTTON PUSH BUTTON CONTROL WITH OVERLOAD

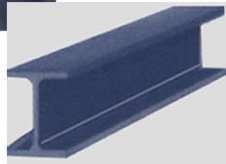


EFFICIENT HYDRAULIC DECK & LIP CYLINDERS



HYDRAULIC SYSTEM WITH HEAVY DUTY 1 HP MOTOR.

Heavy Duty Structural "I" Beam support beams



Made in Canada Exclusively for:

Équipement **I V** Equipment Inc.

Montreal, Quebec, Canada

www.ivdock-ramp.ca

DRMD- HEAVY DUTY "I" - SERIES Hydraulic Dock Leveler



SPECIFICATIONS

Dock Leveler shall be hydraulic Model DRHD _____ 30/35/40/45/50/60/80 (specify size & capacity suffix) complete with hydraulic lip and deck cylinders and 4" maintained lateral ramp flex as supplied by I.V. DOCK-RAMP

MODEL	NOMINAL DECK SIZE		PIT SIZE			CAPACITIES
	Width	Length c/w 16" (406mm) lip	Width	Length	Depth	
DRHD66__	6' (1829mm)	75.5" (1915mm)	74" (1880mm)	61.25" (1556mm)	19.5" (495mm) Rear	30,000 LBS.
DRHD68__	6' (1829mm)	99.5" (2525mm)	74" (1880mm)	85.25" (2165mm)		35,000 LBS.
DRHD610__	6' (1829mm)	123.5 (3137mm)	74" (1880mm)	109.25" (2775mm)	20" (508mm) Front	40,000 LBS.
DRHD6.56__	6'6" (1981 mm)	75.5" (1915mm)	80" (2032mm)	61.25" (1556mm)		45,000 LBS.
DRHD6.58__	6'6" (1981 mm)	99.5" (2525mm)	80" (2032mm)	85.25" (2165mm)	50,000 LBS.	
DRHD6.510__	6'6" (1981 mm)	123.5 (3137mm)	80" (2032mm)	109.25" (2775mm)		
DRHD76__	7' (2134mm)	75.5" (1915mm)	85" (2159mm)	61.25" (1556mm)	60,000 LBS.	
DRHD78__	7' (2134mm)	99.5" (2525mm)	85" (2159mm)	85.25" (2165mm)		
DRHD710__	7' (2134mm)	123.5 (3137mm)	85" (2159mm)	109.25" (2775mm)	80,000 LBS.	

TYPE

Recessed, pit installed hinged dock leveler.
Electro-hydraulic operated.

FUNCTION

Vertical Travel: Working range of 12" (305mm) above and 12" (305mm) below dock level.
Automatic Maintained float Compensation: Provides up to 4" (101mm) to compensate for canted truck beds.
Lip Operation: Hydraulically operated lip that automatically extends into position. Lip will yield under impact of incoming truck and will automatically drop pendant upon truck's departure. The length of the lip extension shall not be less than 16" (406mm) from the ramp edge.

OPERATION

Easy to operate Electro-hydraulic raising and lowering of dock is controlled by a single push button station. Includes means of lowering the dock below platform level.
Velocity fuse limits free fall of dock leveler to less than 3" (76mm).
Unit comes complete with 1 HP totally enclosed powerpack with overload protection and is mounted underneath the deck.
Remote control station is NEMA4 (water & dust tight) rated and provides a single "UP" constant pressure push button in a small 3 1/2" W x 7 1/2" H x 5 3/4" D size.

RATED CAPACITY

Welding procedure compliant with A.W.S.01.198 specifications. All units rated in compliance with AN SI. Standard capacities available 30,000 lbs to 80,000 lbs (13,636kg to 36,363 kg). Structural deck support to include Minimum six full length 4x6 structural "I" beams.

NOTE:

I.V. DOCK-RAMP offers a full line of Dock Levelers, Dock Safety Equipment, Accessories, Ergonomic and Scissor Lift Equipment. Concurrent with our continuing product improvement program, specifications are subject to change without notice.

Please contact your I.V. DOCK-RAMP dealer for latest information.
*Some features illustrated may be optional in certain market areas.

SAFETY DEVICES

- . Full range metal toe guard protection
- . Hydraulic velocity fuse to limit free fall to less than 3"
- . Cross traffic support - lip engaged in saddles
- . Corner below level stops
- . V-Grooved safety maintenance strut, integral to unit
- . Beveled lip

FINISH AND COLOUR

Toe guards painted safety yellow as specified by ANSI Z535.1.
Remainder of unit painted battleship gray.
High visibility OSHA safety striping on stationary side toe guards,

WARRANTY

Standard Ten-year structural and one-year parts and labour from date of shipment. All warranties are subject to standard limitations on liability.
Consult dealer for full warranty details.

STANDARD ACCESSORIES

- . Night Locks
- . Two laminated bumpers 14" W x 10"H x 4.5"

OPTIONAL ACCESSORIES

- . Under deck support for 3-wheel lift truck application.
- . Automatic -return to cross traffic position.
- . Foam insulation underside of deck.
- . Side and rear rubber style or nylon brush style weather seals.
- . 18" (457mm) or 20" (508mm) long lip.
- . Remote mounted powerpack on 24' (7.31m) hydraulic hose.
- . Pour-in-pan (dock leveler welded to a steel pan, allowing it to be "poured in place" after concrete slab is poured).
- . Vehicle restraint system to keep trailer securely stationed at the loading dock.

AUTHORIZED DEALER:

