

I.V.

# DOCK - RAMP

## HEAVY DUTY "I" SERIES

### Mechanical Dock Leveler



Durability is the hallmark of I.V. DOCK-RAMP. We deliver one of the highest strength ratios in the industry. We incorporate a minimum of six (6) I-beam deck supports in all I-Series Dock Levelers. At higher capacities that increases to eight (8) I-beams. Structural I-beams offer greater strength support.

### Standard Features

#### OPERATION

Spring biased counterbalanced system providing smooth, quiet operation. To operate, pull the release chain. DOCK-RAMP's heavy duty lift springs do the work. The deck rises and the lip is smoothly powered out to the locked position. Simply walk the deck down onto the truck bed and begin loading. On truck departure, the lip automatically releases and lowers allowing the unit to be returned to the cross traffic position.

Dependable friction type hold down system that reduces cross traffic bounce and provides instant hold at any point in the full operating range.

Front point main spring tension adjustments provide efficient and reliable operational fine tuning.

#### SAFETY

- . High visibility safety striping alerts personnel when dock leveler is in the extended position above cross traffic.
- . V-grooved maintenance stand supports both deck and lip for safe under deck inspections
- . Heavy-duty three piece full operating range toe guard protection for maximum operator safety\*
- . Yieldable lip safely collapses if struck while in extended position.
- . Mechanical fall safe prevents platform free fall.\*
- . Dual purpose lip keepers for both cross traffic support and automatic night locks.
- . (2) bumpers to protect the building wall.

#### LIP

- . Consistent and reliable lip extension is powered by a mechanical spring system, with lip assist.
- . Yieldable lip provides shock absorbing action to prevent potential damage caused by reversing trailer impact.

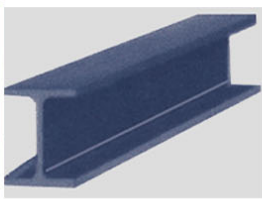


#### CONSTRUCTION

- . 50,000 PSI high tensile checker plate
- . Minimum six full length structural 4 x 6 "I" beams, provide maximum deck support throughout dynamic impact area.
- . Flat bar rear frame for quick and easy installation to suit inconsistent pit construction tolerances.
- . Continuous full width plus four vertical rear frame supports to absorb cross traffic impact.
- . Platform designed with floating rear hinge. This floating action allows full width contact between lip and truck bed. Prevents damage to forks, tires, steering system and load. Allows up to 4" of lateral deck compensation to service canted truck beds.



V-grooved maintenance stand supports both deck and lip for safe under deck inspections



Heavy Duty Structural "I" Beam support beams



Dual purpose lip keepers for both cross traffic support and night locks.

Made in Canada Exclusively for:

Équipement **I V** Equipment

Inc.

Montreal, Quebec, Canada

[www.ivdock-ramp.ca](http://www.ivdock-ramp.ca)

# DRMD- HEAVY DUTY "I" - SERIES Mechanical Dock Leveler



## SPECIFICATIONS

Dock Leveler shall be Heavy Duty mechanical Model DRMD \_\_\_\_\_-30/35/40/45/50 (specify size & capacity suffix) comes complete with locking hold down mechanism and 4" (101mm) maintained deck tilt as supplied by I.V. DOCK-RAMP

MODEL	NOMINAL DECK SIZE		PIT SIZE			CAPACITIES
	Width	Length c/w 16" (406mm) lip	Width	Length	Depth	
DRMD66__	6' (1829mm)	75.5" (1915mm)	74" (1880mm)	61.25" (1556mm)	19.5" (495mm) Rear	30,000 LBS.
DRMD68__	6' (1829mm)	99.5" (2525mm)	74" (1880mm)	85.25" (2165mm)		
DRMD610__	6' (1829mm)	123.5 (3137mm)	74" (1880mm)	109.25" (2775mm)	20" (508mm) Front	35,000 LBS.
DRMD6.56__	6'6" (1981 mm)	75.5" (1915mm)	80" (2032mm)	61.25" (1556mm)		
DRMD6.58__	6'6" (1981 mm)	99.5" (2525mm)	80" (2032mm)	85.25" (2165mm)	40,000 LBS.	
DRMD6.510__	6'6" (1981 mm)	123.5 (3137mm)	80" (2032mm)	109.25" (2775mm)		
DRMD76__	7' (2134mm)	75.5" (1915mm)	85" (2159mm)	61.25" (1556mm)	50,000 LBS.	
DRMD78__	7' (2134mm)	99.5" (2525mm)	85" (2159mm)	85.25" (2165mm)		
DRMD710__	7' (2134mm)	123.5 (3137mm)	85" (2159mm)	109.25" (2775mm)		

## TYPE

Recessed, pit installed hinged dock leveler.  
Manually operated.

## FUNCTION

Vertical Travel: Working range of 12" (305mm) above and 12" (305mm) below dock level.  
Automatic Lateral float Compensation: Provides up to 4" (101mm) to compensate for canted truck beds.  
Lip Operation: Mechanically operated lip that automatically extends into position. Lip will yield under impact of incoming truck and will automatically drop pendant upon truck's departure. The length of the lip extension shall not be less than 16"(406mm) from the ramp edge.

## OPERATION

Mechanical Operating System: Attendant pulls the release chain positioned at rear of platform. The deck is driven up by the heavy-duty lift springs and the lip is smoothly powered out to the locked position.

Dock is then "walked" down onto the truck bed. If below level operation is required, a \*second chain located at the front of the platform is activated during walk down. When the truck departs, the lip releases, allowing the unit to be returned to the cross-traffic position.

## RATED CAPACITY

Welding procedure compliant with A.W.S.01.198 specifications. All units rated in compliance with AN SI. Standard capacities available 30,000 lbs to 50,000 lbs (13,636kg to 22,727 kg). Structural deck support to include Minimum six full length 4x6 structural "I" beams.

### NOTE:

I.V. DOCK-RAMP offers a full line of Dock Levelers, Dock Safety Equipment, Accessories, Ergonomic and Scissor Lift Equipment. Concurrent with our continuing product improvement program, specifications are subject to change without notice.

Please contact your I.V. DOCK-RAMP dealer for latest information.  
\*Some features illustrated may be optional in certain market areas.

## SAFETY DEVICES

- . Full range metal toe guard protection\*
- . Mechanical fall safe legs to limit free fall \*
- . Cross traffic support - lip engaged in saddles
- . Corner safety stops
- . V-Grooved safety maintenance strut, integral to unit. Beveled lip.

## FINISH AND COLOUR

Toe guards painted safety yellow as specified by ANSI Z535.1.  
Remainder of unit painted battleship gray.  
High visibility OSHA safety striping on stationary side toe guards,

## WARRANTY

Standard Ten-year structural and one-year parts and labour from date of shipment. All warranties are subject to standard limitations on liability.  
Consult dealer for full warranty details.

## STANDARD ACCESSORIES

- . Night Locks
- . Two laminated bumpers 14" W x 10"H x 4.5"

## OPTIONAL ACCESSORIES

- . Foam insulation underside of deck.
- . Side and rear rubber style or nylon brush style weather seals.
- . 18" (457mm) or 20" (508mm) long lip.
- . Below level lip control (for below level tail loading / unloading).
- . Pour-in-pan (dock leveler welded to a steel pan, allowing it to be "poured in place" after concrete slab is poured).
- . Curb angle set.
- . Special frame sizes to fit existing pits.

**AUTHORIZED DEALER:**

